

CONDOS FOR SALE



NIMA BAY POOL SIDE D2

MARINA VALLARTA, PUERTO VALLARTA, JALISCO

\$290,023 USD.

- Land: 72.85 mts²
- Construction: 72.85 mts²
- Parking: 1
- Bedrooms: 1
- Bathrooms: 2
- No furniture / A.C
- Integral Kitchen / **Breakfast Bar**
- Living / Dining**
- Levels: 1
- Services:** / A.C / 24 hrs. Security

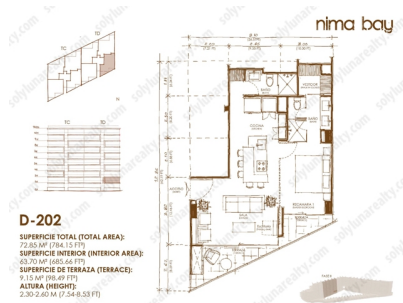
DESCRIPCIÓN

PRE-SALE CONDO - NIMA BAY PHASE 2 A new opportunity opens up to acquire a piece of the heart of Marina Vallarta with 72 new units and a variety of incredible amenities. Model D2 - Pool Side 72.85 Total Area 1 Bedroom 1 Full Bathroom Pool View Amenities 2 pools. Co-Working Space. Poker Room and Club House. Object Library. Outdoor Bars. Access to All Nima Bay Amenities. ...

C. Popa 8, Marina Vallarta, 48335 Puerto Vallarta, Jal., México

Javier Rodriguez
 javier@sollylunarealty.com
 322 779 75 45 / 322 779 75 45
 (322) 2256348 / 84

www.sollylunarealty.com



Toda la información en el documento es de fuentes confiables. Sol y Luna Real Estate recomienda verificarla. Sujeta a cambios sin previo aviso.
 All information in this document is reliable. Sol y Luna Real Estate recommends verification. Changes without notice.