

CONDOS FOR SALE

MODELO 2 ESTACIONAMIENTOS

LA MODERNA, PUERTO VALLARTA, JALISCO

\$2,950,000 MXN.

- Land: 85 mts²
- Construction: 85 mts²
- Parking: 2
- Bedrooms: 2
- Bathrooms: 2

No furniture / A.C
 Kitchen
Living / Dining
 Levels: 1
Services: Electric Service /
 Water / Phone / Tv / Internet /
 Gas Tank / A.C

DESCRIPCIÓN

LA MODERNA TOWER New apartment tower with parking in a very good location. MODEL Kitchen with Induction Grill Dining room 2 Bedrooms (Main with Bathroom) 2 bathrooms Service room 2 Parking Construction 85.50 m2. Includes 3 Minisplit Air Conditioners. LOCATION We are located in front of the Vancouver School in Puerto Vallarta, Jalisco. ...

Sta. María 299, Moderna, 48344 Puerto Vallarta, Jal., México

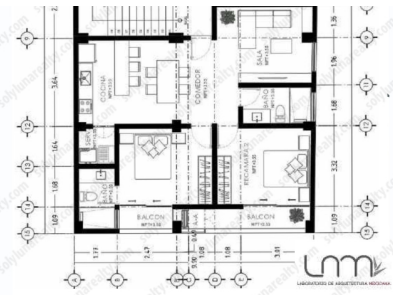
Salvador Lopez

salvador@solylunarealty.com

3221709823 / 3221709823

(322) 2256348 / 84

www.solylunarealty.com



Toda la información en el documento es de fuentes confiables. Sol y Luna Real Estate recomienda verificarla. Sujeta a cambios sin previo aviso.
 All information in this document is reliable. Sol y Luna Real Estate recommends verification. Changes without notice.