





CONDOS FOR SALE

CONDOMINIO BAMBU TIPO 4


BAMBU RESIDENCIAL, PUERTO VALLARTA, JALISCO

\$3,541,004 MXN.




-  Land: 89 mts²
Construction: 89 mts²
 -  Parking: 1
 -  Bedrooms: 2
 -  Bathrooms: 2
- No furniture / A.C
Integral Kitchen / **Breakfast Bar**
Living / Dining
Levels: 1
Services: Electric Service /
Water / Phone / Tv / Internet / A.C
/ 24 hrs. Security

DESCRIPCIÓN

Type 4 of Condominiums in Presale - Bambu Residential. This development also has green areas, as well as a swimming pool, courts and also a clubhouse to enjoy the benefits of your property, it is also only 5 minutes from the beach and many other places of interest in the area, therefore , an excellent location to live. Characteristics : Construction from: 89 M2 2 bedrooms 2 bathrooms Living room Dining room Kitchen Terrac...

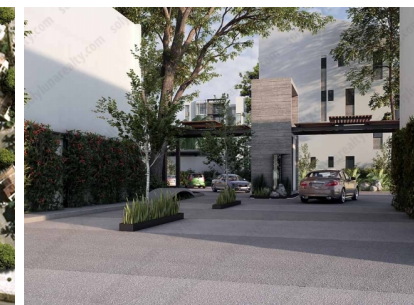
 Mezquite 447, Vallarta 500, 48315 Puerto Vallarta, Jal., México

Javier Rodriguez

 javier@sollylunarealty.com
 322 779 75 45 / 322 779 75 45
 (322) 2256348 / 84

www.sollylunarealty.com

SCAN ME



Toda la información en el documento es de fuentes confiables. Sol y Luna Real Estate recomienda verificarla. Sujeta a cambios sin previo aviso.
All information in this document is reliable. Sol y Luna Real Estate recommends verification. Changes without notice.